



MILAM COUNTY

4-H NEWS



Milam County 4-H Green and Growing

February 2012
Inside this issue:

4-H Calendar

February:

- 11 Livestock Showmanship Clinic (page 10)
- 14 MCJLS Entry Night in Thorndale (page 9)
- 15 MCJLS Broiler Pick-Up (page 9) **(CHANGE IN THE DATE)**
- 16 MCJLS Entry Night in Rockdale (page 9)
- 16 San Antonio Livestock Show Horse Judging Contest
- 17 Dick Wallrath life as a movie - "Deep In The Heart" (page 3)
- 18 San Antonio Livestock Show Consumer Contest
- 20 County Holiday
- 21 MCJLS Bunnies tattooed (page 9)
- 21 MCJLS Home Economic Entries Due (page 8)
- 21 MCJLS Entry Night in Cameron (page 9) **(TIME CHANGE)**

March:

- 1 Deadline for County Council Officer Sign-Up (page 6)
- 1 Sign-Up for Texas 4-H Congress (page 7)
- 3 District Consumer and Nutrition Quiz Bowl Contests
- 3 Houston Livestock Show Plant I.D. Contest
- 5 County Contest Night (Roundup, Share the Fun, Fashion Show) (page 4 -5)
- 14 Community Service for Ronald McDonald House and Military Kids (page 3)
- 15 Deadline for Brigade Applications (page 10)
- 20 County Council Elections and Leaders Meetings (page 6)
- 20 County 4-H Youth Board Meeting (page 6)
- 29-31 Milam County Junior Livestock Show (page 9)
- 30 Milam County Junior Livestock Show Home Economics Show (page 8)

April

- 13 District Plant I.D. and Range Evaluation Contests
- 13 District Fashion Show
- 14 District Horse Judging Contest
- 16 Deadline to Submit Application for National 4-H Congress (page 7)
- 21 Multi-District Judging Contest (Soils)

May

- 1 County 4-H Camp Registration Starts
- 1 Deadline for Horse Validation Registration (page 5)
- 5 District 4-H Roundup Contest
- 15 Ag in the Classroom
- 31 Final Sign-Up for District 4-H Council Officer Election
- 31 Final Sign-up for District 4-H Leadership Lab
- 28 County Holiday

June

- 1 Final Date for County 4-H Camp Registration
- 11-15 State 4-H Roundup in Lubbock
- 18-19 District Horse Show
- 21 County 4-H Record Book Judging and Council Meeting
- 27-29 District 4-H Leadership Lab at State 4-H Center in Brownwood

July

- 6-8 County 4-H Camp
- 15-18 Texas 4-H Congress in Austin (page 7)
- 27-29 State 4-H Volunteer Conference in San Antonio

⇒ 4-H Enrollment	2
⇒ Club Manager Listing	
⇒ DEEP IN THE HEART Movie - Feb 17	3
⇒ Community Service Projects	
⇒ March 14th Community Service Delivery Date	
⇒ County Contest Night in March	4
⇒ Sign-Up for District Contests	
⇒ Horse Project Group	5
⇒ Horse Validation Deadline—May 1	
⇒ Share the Fun Contest Information	
⇒ New 4-H Record Book System	6
⇒ 4-H Council Officer Sign-Up Deadline	
⇒ 4-H Council & Leaders Meeting	
⇒ 4-H Youth Board Meeting	
⇒ Photography Contest for Seniors	7
⇒ Texas 4-H Congress	
⇒ National 4-H Congress	
⇒ Milam County Jr. Livestock Show Home Economics Entry Deadline	8
⇒ Congratulations to 4-Hers on Contest Achievements	
⇒ Milam County Jr. Livestock Show Important Dates	9
⇒ Animal Entry Nights Deadline	
⇒ Livestock Showmanship Clinic	10
⇒ State 4-H Opportunities	
⇒ Mash Camp	
⇒ Outdoor Challenge Camp	
⇒ State Brigades	
⇒ 4-H Foundation Alliances	11
⇒ Eligibility Form Information	
⇒ Website & Contact Information	





NEW ENROLLMENT PROCESS FOR 2011-2012



Access the 4-H Connect on-line system at: <https://texas.4honline.com>

New Members

Returning Members

<ul style="list-style-type: none"> ◆ Create family profile by selecting the “I need to setup a profile” button 	<ul style="list-style-type: none"> ◆ Use your email and password to access your profile. ◆ If you have forgotten your email or password contact the Extension office. ◆ DO NOT create a new profile.
<ul style="list-style-type: none"> ◆ Add youth and/or adult profiles under your family profile. ◆ Make sure information is correct before you move on to next screen. 	<ul style="list-style-type: none"> ◆ Click on the “Edit” button beside profile name. ◆ Click on “ Enroll for 2011-2012” (at bottom of page). ◆ Review and update all information pertaining to this profile. ◆ DO NOT just click and move on. ◆ Be sure the school and grade are correct.
<ul style="list-style-type: none"> ◆ Continue to INVOICE page <ul style="list-style-type: none"> ◆ Review Invoice <ul style="list-style-type: none"> ◆ Beginners or Clover Kids do not pay a registration fee ◆ Continue to PAYMENT Screen (Only use credit card or e-check) <ul style="list-style-type: none"> ◆ (\$20.00 Registration Fee - Aug. 1 - Oct. 31) or (\$25.00 Registration on Nov. 1) 	
<ul style="list-style-type: none"> ◆ When the county Extension office receives your enrollment notice, they will review all information and approve your membership. Then your status will be “Active”. <ul style="list-style-type: none"> ◆ Only “Active” status 4-Hers will be able to participate in 4-H activities and contests. 	

Remember You Need to be an Active 4-H Member to participate in the MCJLS, Major Shows, Roundup Contest, Etc. Sign-Up TODAY!!

Club Manager Contact Information

- Cameron 4-H Club**—Jennifer Kostroun jkostroun@cameronisd.net and Melissa Cobb mcobb@rogersisd.k12.tx.us
Gause 4-H Club — Wanda Lee - 979- 279-2472 and Kelly Cooper klee-cooper@gauseisd.net
Milano 4-H Club — (contact the Milam County Extension Office for this club —ce-walker@tamu.edu)
Rockdale 4-H Club — Sarah Goeres sarahgoeres@me.com
Shooting Sport Club — Tiny & Susan Dean susdean@templejc.edu — Chris & Kelly Cooper klee-cooper@gauseisd.net
Thorndale 4-H Club — Michelle Fisher michellef@floydsglass.com and Bethany Fisher bethandyfisher@yahoo.com



Deep In The Heart

Coming to All Texas CINEMARK Theaters February 17th

- ◆ "Deep in the Heart" reveals the true-life story of Mr. Richard "Dick" Wallrath. No one person has ever given more financially to the Texas 4-H and Texas FFA Scholarship Programs than Dick Wallrath. He has also provided tremendous financial assistance to 4-H and FFA members through major livestock show premium auctions.
- ◆ We sincerely hope that our 4-H Families will support the emotion-packed documentary of Dick's life for two reason. First, it could have an impact on your own life. Secondly, because of Mr. Wallrath's continued generosity, a portion of all ticket sales will go to both Texas 4-H and Texas FFA to further strengthen their much needed scholarship programs.
- ◆ Please go on the opening weekend of the movie—February 17th. The success of this opening weekend will dictate their plan for nationwide release.



4-H Community Service Delivery

March 14th 4-Hers and Leaders will be taking donations and can tabs to the Ronald McDonald House in Temple and stuffed animals for the Military. Clubs need to collect donations (see the details below) and be ready to delivery them on in March. If you have donations and/or would like to help delivery the donations, contact the Extension Office for additional details. We will be meeting at the Ronald McDonald House at 10:00 a.m. on March 14th. After the delivery at the Ronald McDonald House, the group will delivery Huggables for the Military kids. Just let the Extension Office know if you are interested in helping.



◆ Ronald McDonald House Donations

Wish List Items will be delivered during spring break to the Temple Ronald McDonald Home. Start now collecting items like: individual serving size snack and meal items (no refrigeration required); paper towels, napkins, plates, trash bags, toys, games, etc.

◆ Can Tabs

Can tabs are collected throughout the year. Drop them off at the Extension Office and during Spring Break 4-Hers will deliver them to the Temple Ronald McDonald House.



◆ Operation "Huggables"

Operation "Huggables" is collecting stuffed animals that are donated to children of military families who have a parent being deployed overseas. Bring new or gently used stuffed animals and drop them off at the Extension Office. You can also contact the 4-Hers coordinating the project: William Dean and A.J. Harwell.



County Contest Night - March



March 5, 2012 is the date set for the County Contest Night at Ben Milam Elementary School in Cameron. 4-Hers wanting to compete in District for the following contests will need to enter the March 5th contest for County Judging.

- ◆ Roundup Presentations
- ◆ Share the Fun Contests (additional information on page 5)
- ◆ Fashion Show

Information on the Roundup Presentations and Share the Fun Contests are available on the state website. Just go to the county 4-H website and click on State 4-H Guide and Information Resources. The 2012 Roundup Guidelines gives resources and detail information on the different contests. There are changes in several of the contests.

- ◆ State 4-H Roundup Guidelines and Contest Resources are on our website under 4-H Information: <http://milam.agrilife.org/>
- ◆ Fashion Show and Fashion Storyboard Contest information is on the following website <http://fcs.tamu.edu/clothing/4h/packet/index.php>

Email or call the Extension Office for more information on County Contest Night or any other contest opportunity. Entry forms are on the county website. **You need to sign-up for All County Opportunities Listed Below in March.**

Contest Opportunities

- ◆ The Extension Office needs to know if you are interested in the Contest Opportunities listed below.
- ◆ Contact the Extension Office or sign-up on the Contest Entry Form on the website.
- ◆ Sign-Up For Contest Opportunities by March 5 so we can get you registered for the District Competitions.

Fashion Show Contest

- ◆ Fashion Storyboard Contest
- ◆ Fashion Show

Share the Fun Contest

- ◆ Poetry/Prose
- ◆ Vocal
- ◆ Musical -- Instrumental
- ◆ Solo/Band Performance
- ◆ Choreographed Routines
- ◆ Celebrate 4-H

Food Contest

- ◆ Food Challenge
- ◆ Food Show
- ◆ Nutrition Quiz Bowl

Other District Contests

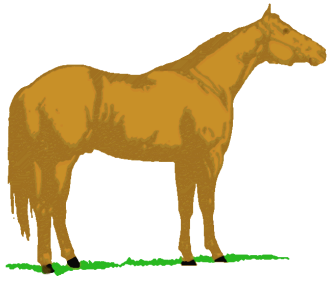
- ◆ Beef Quiz Bowl
- ◆ Consumer Decision Making
- ◆ Entomology Identification
- ◆ Horse Quiz Bowl
- ◆ Indoor Rifle Match
- ◆ Leaders 4 Life Skill-A-Thon
- ◆ Horse Judging
- ◆ Livestock Judging
- ◆ Meat Judging & Identification
- ◆ Soil Judging

Range & Plant I.D. Contests

- ◆ Range and Pasture Identification
- ◆ Range Evaluation

Roundup Presentations

- ◆ Beef
- ◆ Clothing and Textiles
- ◆ Companion Animals
- ◆ Computer Technology
- ◆ Family Life
- ◆ Health
- ◆ Horse
- ◆ Natural Resources
- ◆ Open - General Presentation
- ◆ Open - Agriculture and Natural Resources Presentation - **New for 2012**
- ◆ Open - Family and Consumer Sciences Presentation - **New for 2012**
- ◆ Promote 4-H
- ◆ Public Speaking
- ◆ Safety and Injury Prevention
- ◆ Sheep and/or Goats



Horse Project!

- ◆ If you are interested in the 4-H Horse project, call the Extension Office 254-697-7045 or email ce-walker@tamu.edu to get on the email listing for future meeting activities. The leaders, Tarrin Warren and Amy Laurrell will be planning project meetings.
- ◆ If you are planning to enter the District or State Horse activities, you must complete **Horse Validation materials by May 1. There is no LATE registration.**

Share the FUN contests

Do you sing, dance, play an instrument, or act, you need to sign-up and show off your talents in the Share the Fun Contest. The County Contest is on March 5th and the District Contest is on May 5th.

Below you will find brief descriptions of the contest rules. Check out the website or contact the Extension Office for complete rules -

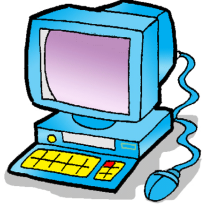
http://texas4-h.tamu.edu/files/2011/12/roundup_contest_sharethefun_letter.pdf

- ◆ **CELEBRATE 4-H.** An entry may consist of one (1) to nine (9) participants. May be a 4-H based story line, promoting 4-H, community service, a project or activity. May incorporate music, vocal selections, and/or choreographed routines but these aspects cannot be more than half of the performance. Four (4) minutes for set-up and break down; maximum of six (6) minutes for presentation for a total of ten (10) minutes per act.
- ◆ **CHOREOGRAPHED ROUTINES.** An entry may consist of one (1) to nine (9) participants. No speaking to form a skit or story line. The act requires choreography and can be demonstrated through twirling, pom pom squad routines, jump rope teams, basketball dribbling exhibitions, or dance (jazz, tap, country & western, ballroom, etc.), plus sign language presentations to music. May use taped music on CD or cassette tape, but may not use an accompanist. Four (4) minutes for set-up and break down; maximum of six (6) minutes for presentation for a total of ten (10) minutes per act.
- ◆ **MUSICAL/INSTRUMENTAL.** An entry may consist of one (1) to nine (9) participants. Musical presentation may be musical instruments accompanied by background tape or an instrumental performance only. No accompanist will be allowed. Participants may not sing or incorporate a skit, poetry, prose, or choreography with their act. Four (4) minutes for set-up and break down; maximum of six (6) minutes for presentation for a total of ten (10) minutes per act.
- ◆ **POETRY/PROSE.** An entry may consist of one (1) to nine (9) participants. Acts which showcase poetry or prose are required. The act may NOT incorporate vocal, musical, and/or choreographed routine. Judged on material chosen, message, talent, presentation style, props/costuming. Four (4) minutes total for set-up and break down; maximum of six (6) minutes for presentation for a total of ten (10) minutes per act.
- ◆ **SOLO/BAND PERFORMANCE.** An entry may consist of one (1) to nine (9) participants. All 4-H members entered in the category must be a part of the act by playing a musical instrument, singing, or both (solo performance must play an instrument and sing). Participants **MUST** incorporate singing in the acts, but cannot incorporate skits, poetry, or prose. Four (4) minutes for set-up and break down; maximum of six (6) minutes for presentation for a total of ten (10) minutes per act.
- ◆ **VOCAL.** An entry may consist of one (1) to nine (9) participants. Vocal presentation may be done a cappella or with an accompaniment CD/tape. No accompanist will be allowed for this category. All members in the act must be singing. No lip sync will be allowed. Contestants may not present skits, poetry or other speaking during the act. Judged on talent, showmanship, vocal presentation, and material chosen. Four (4) minutes for set-up and break down; maximum of six (6) minutes for presentation for a total of ten (10) minutes per act.



4-H Record Books for 2012 have NEW forms.

If you missed the county training, you can still pick-up information and examples at the Milam County Extension Office. 4-H Report Books have new format for Junior, Intermediate and Senior levels. Beginners can complete the Junior forms for county recognition. You must use the new forms for the 2011 - 2012 4-H activities.



The NEW Record Book System starts with the 2011—2012 Year. All previous years record book information will just be attached behind the current year. This will make record book preparation A LOT EASIER, so you can submit Record Books for recognition of the project experiences. Start now so you will have a record book ready to submit for county judging on June 21th. For additional information, contact the Milam County Extension Office at 254-697-7045.

The website for the new record book system is still going through a few updates, but if you are interested in trying out the system go to the following website - <http://4hreports.com/index.aspx>

- Step 1: Click on Member Login
- Step 2: Put in your family email (one you view on a regular basis) and a pass word. Click on set up a profile
- Step 3: All 4-Hers in the family can set up their record book pages by opening the original and then saving the form with the 4-Hers name.
- Step 4: Keep up with your project activities.



This new system will make it easier for you to complete a 4-H Record Book for recognition at the County Celebration. If a club wants additional training in February—May, contact the Extension Office.

Record Books Due on June 21, 2012

**4-H Council
and
Leaders Meetings
County Council Officer
Sign-UP Deadline
March 1**

March 1 Officer Sign-Up Deadline: If you want to serve as an officer for the Milam County 4-H Council, you must sign-up by March 1. Forms are available at the Extension Office and county website. Complete the form and submit it to the Milam County Extension Office by March 1.

March 20 Council Election: 4-H Council and Leaders meeting is set for March 20 at 7:00 p.m. at Bea's Kitchen in Cameron. The Council will elect officers for the 2012—2013 Year. Leaders and Council will discuss needed training sessions for the spring and summer activities.

March 20 Youth Board Meeting: A Youth Board meeting will be conducted at 6:30 p.m. for council officers and club managers. Any other 4-Hers and leaders are welcome to attend.



Photography Contest

State 4-H Photography Contest

For Senior Only



Complete Rules on County Website

Photo Files Due by March 30, 2012 --- (received by the Extension Office)

Age Division:

Senior 14 - 18 years of age as of August 31, 2011

State Photography Contest Rules:

- ◆ **READ THE COMPLETE RULES** for preparing and submitting your photos.
http://texas4-h.tamu.edu/library/files/projects_photography_guidelines.pdf
- ◆ **ALL ENTRIES FOR COUNTY JUDGING MUST BE SUBMITTED By March 30th TO** Cheryl Walker at the following email: cheryl.walker@agnet.tamu.edu
- ◆ **ALL ENTRIES MUST BE SUBMITTED FOR COUNTY JUDGING** and the top photos will be submitted to the State Photography Contest Judging by the Extension Office.

**Texas
4-H Congress - July
Sign-Up Early March**

- **Texas 4-H Congress is set for July 15—18 in Austin.**
- It is one of the premiere leadership and citizenship experiences for your 4-H career. If you are selected to attend Texas 4-H Congress, you will carry a role of the Congress. You will be assigned roles as Representatives, Senators, Lobbyist or Press Corp. You will be a part of a mock Congress session where you prepare, discuss and vote of bills.
- All of this will take place in the Capitol Building (Senate and Representative Chambers). 4-Hers 15 years of age at the time of the event can submit their name to the Milam County Extension Office. Space is limited, so contact the Extension Office for additional details. Remember to submit your name for consideration in early March.

**National
4-H Congress - Nov
Apply by April 16**

The 2012 National 4-H Congress is set for November 29 - December 4 at the Hyatt Regency Atlanta in Georgia. National 4-H Congress is the flagship event of the National 4-H program. The program combines a variety of fun and exciting educational, recreational and networking opportunities. The program combines plenary sessions, seminars, discussion groups, and a service learning experience. The nation's most outstanding community leaders, speakers, and educators present the current and timely information.

Application Process:

Applications must be submitted online and certified through 4HCONNECT by **April 16, 2012**. There is not a fee for this application to be completed online. Interview selection of delegates will be made on the basis of the online application. Contact the Milam County Extension Office for additional information.



Milam County Jr. Livestock Show Home Economics News

Home Economics Department Show - March 30, 2012

At Bea's Kitchen



Feb 21 - Home Economics Entry Deadline - submit to the Milam County Extension Office by 5:00 p.m. or to the show secretary at any of the Animal Tag-In Nights (listed on Page 8 of this newsletter).

2012 Milam County Jr. Livestock Show rules for the animals and home economics department are now available! Check them out on the Milam County Extension website - <http://milam-tx.tamu.edu>. It is your responsibility to read the rules! Below is the Age Divisions and Divisions for the Home Economics Department:

Age Divisions for Home Economics Department:

Beginner Division - Junior Division - Intermediate Division - Senior Division

Available on Website
-- Entry Forms
-- Complete Rules

Home Economics Divisions:

- A. ARTISTIC ARRANGEMENT DIVISION
- C. CREATIVE ART DIVISION
- E. DRAWING DIVISION
- G. PAINTING DIVISION
- I. SCRAPBOOKING DIVISION



- B. CLOTHING DIVISION
- D. COLLECTION / DISPLAY DIVISION
- F. FOOD DIVISION
- H. PHOTOGRAPHY DIVISION
- J. WOOD AND METAL CRAFT

Congratulations

Montgomery County Horse Judging Results

Junior Division :

- ◆ Team Awards - 6th Place Performance and 6th Place overall - Jistol Walzel, Sydney Vaculin, Braden Sexton and Darci Denio
- ◆ Individual Awards: Sydney Vaculin - 9th Place Reasons and Darci Denio - 8th Place Reasons and 9th Place Performance

Intermediate

- ◆ Individual Award: Brodie Sexton - 1st Place Halter
- ◆ Team Participants: Brodie Sexton, Gracen Dach, Emily Graham, and Jale Walzel.

Matagorda County Horse Judging Contest

Junior Division:

- ◆ 6th Place Team - Jistol Walzel, Jale Walzel, Braden Sexton, Brodie Sexton
- ◆ 7th Place Team - Sydney Vaculin, Darci Denio, Gracen Dach, Emily Graham
- ◆ Individual Award - Jistol Walzel - 11th High Point

Coach - Monica Barton

Plant I.D. Wins Fort Worth Contest

Junior Division:

- ◆ 1st Place Team - Cheyenne McWilliams, Kaylee Jackson, Mason Lindig and Patrick Cobb
- ◆ 3rd Place Team - Ethan Stork, Heath Hollas and Neeraj Bhakta
- ◆ 4th Place Team - Rebecca Kostroun, Kassidy Hundle and Kyrene Jackson
- ◆ Individual Awards: 1st - Cheyenne McWilliams, 3rd - Kaylee Jackson, 5th - Rebecca Kostroun, 6th - Mason Lindig, 7th - Heath Hollas, 8th - Ethan Stork, and 10th - Kassidy Hundle.

Senior Division:

- ◆ 1st Place Team - Devin Fisher, Madeline Kostroun, and Karl Woelfel
- ◆ Individual Awards: 2nd - Devin Fisher; 4th - Madeline Kostroun; 6th - Karl Woelfel.

Coach - Irby McWilliams

MCJLS

March 29 - 31, 2012

- ◆ Rules are posted on the county website and copies are available at the Milam County Extension Office.

DATE CHANGE ◆ Feb 15—Broiler Pick-Up - Youth Expo Building, 4:00 - 5:30 p.m.

- ◆ Feb. 21—Market Bunnies will be tattooed, Youth Expo Building, 4 - 6 p. m.
- ◆ All animal entries must be received by the show secretary (not Extension Office)
- ◆ **Mar 23**—All 4-H Showing at the MCJLS must submit an Eligibility form to the Milam County Extension Office.

****Please Note a Major Change for the 2012 Show****

ALL Steers, Swine, Lambs, and Goats making the sale will be put on the resale truck!

Entry nights for the Milam County Junior Livestock Show have been scheduled. Attending one of the three entry nights is required to turn in entry forms, entry fees, and to ensure that all the required information is included for all livestock entries for the March show. Please note that each exhibitor will be required to provide a social security number with each entry eligible for the auction.

All animal entries must be submitted at an entry night, but Home Economics Department entries may be submitted at an entry night or at the Milam County Extension Office by the February 21 deadline. Entry nights will be held at the following times and locations:

MCJLS Entry Nights

TIME CHANGES

- Feb 14 — Thorndale Ag Science Classroom - 5 - 6 p.m.
- Feb 16 — Rockdale Ag Science Classroom - 5 - 6 p.m.
- Feb 21 — Cameron Youth Expo Building - 4-6 p.m.

Entry Forms Available on Website

Livestock Showmanship Clinic

Date: Saturday, February 11, 2012

Place: Youth Exposition Building in Cameron

There will be a Livestock Showmanship Clinic on February 11 at the Milam County Youth Exposition Building in Cameron. The clinic will begin at 3 p.m. and last approximately 2 hours. Sessions will include Lambs/Goats, Swine, and Poultry.

You are invited to bring your lambs and goats to the session, but will not be required. This is an excellent opportunity to learn more about your 4-H or FFA livestock project and help you move towards success. If you have any questions or need additional information, contact the Milam County Extension Office (254) 697-7045 or Jennifer Hanke (254) 541-4699.

State 4-H Opportunities



MASH Camp

The Medical, Athletic Training, Safety & Health Camp provides youth an opportunity to learn about nutrition, physical activity, health and safety, as well as explore a variety of careers available in the health and medical fields. Activities include tours and hands-on experiences of Texas A&M College of Medicine, Health Science Center, College of Veterinary Medicine, A&M Athletic facilities, and TEEX Disaster City. The camp is scheduled for **June 27-29, 2012** and is open to youth ages 13-17 (at the time of the camp). If you are interested in additional information on this camp, email me — Cheryl.walker@agnet.tamu.edu.



TEXAS 4-H OUTDOOR CHALLENGE

2012 Texas 4-H Outdoor Challenge

- ◆ Are you up for a challenge? Do you love the great outdoors? If so, mark your calendars for June 30-July 1, 2012 for the 4th annual Texas 4-H Outdoor Challenge to be held at the Texas 4-H Conference Center in Brownwood.
- ◆ Grab a friend. Learn, practice, and train to compete in a series of ten outdoor events that will challenge you physically and mentally. Are you the ultimate Texas

Outdoor Challenge team? Visit our website at: www.tinyurl.com/tx4hoc .If you are interested in additional information on this camp, email me — Cheryl.walker@agnet.tamu.edu

Brigades — March 15, 2012 Application Deadline

The Texas Brigades' mission is to educate and empower youths with leadership skills and knowledge in wildlife, fisheries, and land stewardship to become conservation ambassadors for a sustained natural resource legacy. The Texas Brigades is a wildlife-focused leadership development program for high school youth (ages 13-17). Here are the camps, dates and website for applications and more information — <http://www.texasbrigades.org/>

Rolling Plains Bobwhite - June 16-20, 2012 - Centennial Lodge, Coleman

South Texas Bobwhite - June 24-28, 2012 - 74 Ranch, Campbellton

South Texas Buckskin - June 3-7, 2012 - Southern Star Ranch, Uvalde

North Texas Buckskin - July 15-19, 2012 - Stasney's Cook Ranch, Albany

Bass Brigade - July 9-13, 2012 - Warren Ranch, Santa Anna

Waterfowl Brigade - July 22-26, 2012 - Big Woods on the Trinity, Tennessee Colony

Milam County Extension Office Staff

Extension programs serve people of all ages regardless of socioeconomic level, race, color, sex, religion, disability, or national origin.

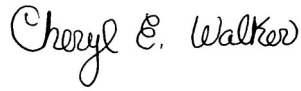
The Texas A&M University System, U.S. Department of Agriculture, and the County Commissioners Court of Texas Cooperating.

Milam County 4-H
100 E. 1st Street
Cameron, TX 76520

Phone: 254-697-7045

Fax: 254-697-7046

E-mail: milam@ag.tamu.edu



Cheryl Walker
County Extension Agent
Family & Consumer Sciences

Click on 4-H in Milam County for more information & 4-H Updates
<http://milam-tx.tamu.edu/>



Jon Gersbach
County Extension Agent
Ag & Natural Resources

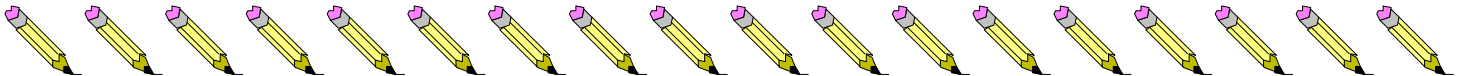
Marcia Felton
Office Manager



4-H Re-Enrollment or Enrollment



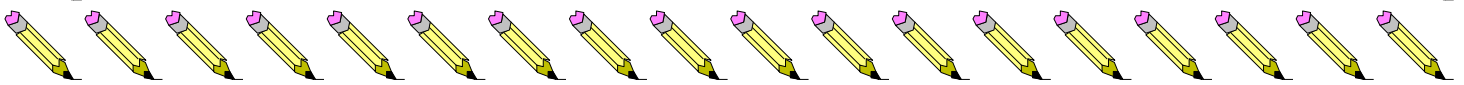
- ◆ On-Line Enrollment at <https://texas.4honline.com>
- ◆ \$20 Annual Youth Enrollment Fee (\$25 after October 31)
- ◆ Annual Enrollment required for ALL 4-Hers and Adult Leaders



Eligibility Forms



- ⇒ Required from 4-Hers for each competitive event (Sept - May)
- ⇒ Completed by 4-Her and Signed by the school .
- ⇒ Return signed forms to Extension Office by fax or mail one week prior to event.
- ⇒ Forms available on the Extension website and at the Extension Office.



4-H Foundation Alliances and Opportunities

- ◆ **LONE STAR 4-H COLLECTION JEWELRY** at <http://texas4hfoundation.org/texas-4-h-alliances/lone-star-collections-4-h-jewelry>
- ◆ **LA QUINTA OFFERS 4-H DISCOUNT.** 15% discount on rooms through direct reservations by calling the hotel direct, calling the toll free reservation line at 1-800-531-5900, or online at www.lq.com. Please mention the "TX4H" promotional code when making reservations.
- ◆ **Texas 4-H Foundation website** for the current 4-H Foundation Alliances <http://texas4hfoundation.org/texas-4-h-alliances>