



MILAM COUNTY

4-H NEWS



Milam County 4-H Green and Growing

December 2011
Inside this issue:

4-H Calendar

December:

- 1 4-H Enrollment \$25 per member (page 2)
- 23 County Holiday
- 26 County Holiday

January:

- 6-8 Teen Retreat at State 4-H Center (page 10)
- 10 County Consumer Practice Starts (page 6)
- 13 Texas 4-H Beekeeping Essay Contest deadline (page 10)
- 15 Photography Contest Deadline for San Antonio (page 5)
- 16 County Holiday
- 31 County 4-H Record Book Training (page 3)
- 31 County 4-H Council and Leaders Meetings (page 3)

February:

- 8 MCJLS Broiler Pick-Up (page 8)
- 14 MCJLS Entry Night in Thorndale (page 8)
- 16 MCJLS Entry Night in Rockdale (page 8)
- 18 San Antonio Livestock Show Consumer Contest (page 6)
- 20 County Holiday
- 21 MCJLS Bunnies tattooed (page 8)
- 21 MCJLS Home Economic Entries Due (page 7)
- 21 MCJLS Entry Night in Cameron (page 8)

March:

- 3 District Consumer and Nutrition Quiz Bowl Contests
- 3 Houston Livestock Show Plant I.D. Contest
- 5 County Contest Night (Roundup, Share the Fun, Fashion Show) (page 4)
- 20 County Council Elections and Leaders Meetings (page 3)
- 29-31 Milam County Junior Livestock Show (page 7 and 8)

April

- 6 County Holiday
- 13 District Plant I.D. and Range Evaluation Contests
- 13 District Fashion Show
- 14 District Horse Judging Contest
- 21 Multi-District Judging Contest (Soils)

May

- 1 County 4-H Camp Registration Starts
- 5 District 4-H Roundup Contest
- 15 Ag in the Classroom
- 31 Final Sign-Up for District 4-H Council Officer Election
- 31 Final Sign-up for District 4-H Leadership Lab
- 28 County Holiday

June

- 1 Final Date for County 4-H Camp Registration
- 11-15 State 4-H Roundup in Lubbock
- 18-19 District Horse Show
- 21 County 4-H Record Book Judging and Council Meeting
- 27-29 District 4-H Leadership Lab at State 4-H Center in Brownwood

⇒ 4-H Enrollment	2
⇒ Club Manager Listing	
⇒ Record Books are Changing in 2012	3
⇒ County Council & Leaders Meetings	
⇒ County Contest Night in March	4
⇒ Photography Contest at San Antonio Livestock Show	5
⇒ Horse Project Group	6
⇒ Consumer Project Group	
⇒ Milam County Jr. Livestock Show Home Economics Entry Deadline	7
⇒ Milam County Jr. Livestock Show Important Dates	8
⇒ Animal Entry Nights Deadline	
⇒ County Community Service Projects	9
⇒ Ronald McDonald House	
⇒ Can Tabs	
⇒ Operation "Huggables"	
⇒ Congratulations to 4-Hers	
⇒ State 4-H Opportunities	10
⇒ Teen Retreat	
⇒ Texas 4-H Beekeeping Essay	
⇒ 4-H Foundation Alliances	
⇒ Website & Contact Information	11





NEW ENROLLMENT PROCESS FOR 2011-2012



Access the 4-H Connect on-line system at: <https://texas.4honline.com>

New Members

Returning Members

<ul style="list-style-type: none"> ◆ Create family profile by selecting the “I need to setup a profile” button 	<ul style="list-style-type: none"> ◆ Use your email and password to access your profile. ◆ If you have forgotten your email or password contact the Extension office.
<ul style="list-style-type: none"> ◆ Add youth and/or adult profiles under your family profile. ◆ Make sure information is correct before you move on to next screen. 	<ul style="list-style-type: none"> ◆ Click on the “Edit” button beside profile name. ◆ Click on “ Enroll for 2011-2012” (at bottom of page). ◆ Review and update all information pertaining to this profile. ◆ DO NOT just click and move on. ◆ Be sure the school and grade are correct.
<ul style="list-style-type: none"> ◆ Continue to INVOICE page <ul style="list-style-type: none"> ◆ Review Invoice <ul style="list-style-type: none"> ◆ Beginners or Clover Kids do not pay a registration fee ◆ Continue to PAYMENT Screen (Only use credit card or e-check) 	
<ul style="list-style-type: none"> ◆ When the county Extension office receives your enrollment notice, they will review all information and approve your membership. Then your status will be “Active”. <ul style="list-style-type: none"> ◆ Only “Active” status 4-Hers will be able to participate in 4-H activities and contests. 	

Remember You Need to be an Active 4-H Member to participate in the MCJLS, Major Shows, Roundup Contest, Etc. Sign-Up TODAY!!

Club Manager Contact Information

Cameron 4-H Club—Jennifer Kostroun jkostroun@cameronisd.net and Melissa Cobb mcobb@rogersisd.k12.tx.us

Gause 4-H Club — Wanda Lee - 979- 279-2472 and Kelly Cooper klee-cooper@gauseisd.net

Milano 4-H Club — (contact the Milam County Extension Office for this club —ce-walker@tamu.edu)

Rockdale 4-H Club — Sarah Goeres sarahgoeres@me.com

Shooting Sport Club — Tiny & Susan Dean susdean@templejc.edu — Chris & Kelly Cooper klee-cooper@gauseisd.net

Thorndale 4-H Club — Michelle Fisher michellef@floydsglass.com and Bethany Fisher bethandyfisher@yahoo.com



4-H Record Books for 2012 have NEW forms.

In January 2012 a county 4-H Record Book Training will be conducted to introduce the computer version of the "NEW" 4-H Record Book. We have not seen the final version, but what we have seen looks easier.

Record Book Training: Tuesday, January 31, 2012
Time: 6:00—7:00 p.m.
Place: New Salem Building at Rockdale Fair Grounds

The NEW Record Book System starts with the 2011—2012 Year. For all previous years record book information will just be attached behind the current year. This will make record book preparation A LOT EASIER.



The website for the new record book system is still going through a few updates, but if you are interested in trying out the system go to the following website

<http://4hreports.com/index.aspx>

- Step 1: Click on Member Login
- Step 2: Put in your family email (one you view on a regular basis) and a pass word. Click on set up a profile
- Step 3: All 4-Hers in the family can set up their record book pages by opening the original and them saving the form with the 4-Hers name.
- Step 4: Keep up with your project activities.



During the training in January, we will go through examples for each form. This new system will make it easier for you to complete a 4-H Record Book for recognition at the County Celebration. Mark your calendars for January 31—County Record Book training. If a club wants additional training in February—May, contact the Extension Office.

Record Books Due on June 21, 2012

4-H Council and Leaders Meetings

January 31: 4-H Council and Leaders meeting is set for Jan. 31 at 7:00 p.m. in the New Salem Building on the Rockdale Fair Grounds. The Council will work on the Leaders for Life Training while leaders and club managers will discuss major business ideas including the updating of the Council By-Laws.

March 20: 4-H Council and Leaders meeting is set for March 20 at 7:00 p.m. at Bea's Kitchen in Cameron. The Council will elect officers for the 2012—2013 Year. Leaders and Council will discuss needed training sessions for the spring and summer activities.

A Youth Board meeting will be conducted at 6:30 p.m. for council officers and club managers.

County Contest Night - March



March 5, 2012 is the date set for the County Contest Night at Ben Milam Elementary School. 4-Hers wanting to compete in District for the following contests will need to enter.

- ◆ Roundup Presentations
- ◆ Share the Fun Contests
- ◆ Fashion Show

Information on the Roundup Presentations and Share the Fun Contests are available on the state website. Just go to the county 4-H website and click on State 4-H Guide and Information Resources. The 2012 Roundup Guidelines resources will give detail information on the different contest. There are changes in several of the contests.

- ◆ State 4-H Roundup Guidelines and Contest Resources are on our website under 4-H Information: <http://milam.agrilife.org/>
- ◆ Fashion Show and Fashion Storyboard Contest information is on the following website <http://fcs.tamu.edu/clothing/4h/packet/index.php>

Email or call the Extension Office for more information on County Contest Night or any other contest opportunity. Enter forms will be on the county website in January and in the January newsletter.

Contest Opportunities

Fashion Show Contest

- ◆ Fashion Storyboard Contest
- ◆ Fashion Show

Share the Fun Contest

- ◆ Poetry/Prose
- ◆ Vocal
- ◆ Musical -- Instrumental
- ◆ Solo/Band Performance
- ◆ Choreographed Routines
- ◆ Celebrate 4-H

Food Contest

- ◆ Food Challenge
- ◆ Food Show
- ◆ Nutrition Quiz Bowl

Other District Contests

- ◆ Beef Quiz Bowl
- ◆ Consumer Decision Making
- ◆ Entomology Identification
- ◆ Horse Quiz Bowl
- ◆ Indoor Rifle Match
- ◆ Leaders 4 Life Skill-A-Thon
- ◆ Horse Judging
- ◆ Livestock Judging
- ◆ Meat Judging & Identification
- ◆ Soil Judging

Range & Plant I.D. Contests

- ◆ Range and Pasture Identification
- ◆ Range Evaluation

Roundup Presentations

- ◆ Beef
- ◆ Clothing and Textiles
- ◆ Companion Animals
- ◆ Computer Technology
- ◆ Family Life
- ◆ Health
- ◆ Horse
- ◆ Natural Resources
- ◆ Open - General Presentation
- ◆ Open - Agriculture and Natural Resources Presentation - **New for 2012**
- ◆ Open - Family and Consumer Sciences Presentation - **New for 2012**
- ◆ Promote 4-H
- ◆ Public Speaking
- ◆ Safety and Injury Prevention
- ◆ Sheep and/or Goats



Photography Contest San Antonio Livestock Show



Complete Rules on County Website

Photos Due by January 15, 2012 --- (received by the Show)
4-Hers will need to mail photos to San Antonio Livestock Show office.

**Start a Photo Project
By Taking Pictures of Your Project Activities!**

Age Divisions:

- Junior 8 years old and in 3rd grade or 9 - 10 years as of August 31, 2011
- Intermediate 11-13 years of age as of August 31, 2011
- Senior 14 - 18 years of age as of August 31, 2011

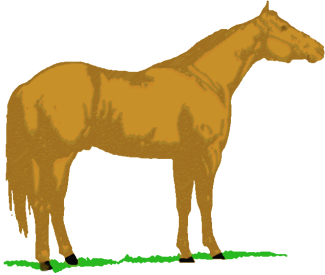
Photo Categories:

PEOPLE	NATURE/LANDSCAPE	THEME
ANIMALS - WILDLIFE	PLANT/FLORA	NIGHT PHOTOGRAPHY
ANIMALS - DOMESTIC	DETAILS & MACROS	FOOD
MARINE/AQUATICS	DIGITAL DARKROOM	DOMINANT COLOR
ELEMENTS OF DESIGN		

San Antonio Photos :

- ◆ **READ THE COMPLETE RULES** for preparing and submitting your photos. Here are some of the highlights for the rules.
- ◆ A connection to the complete rules is posted on the county 4-H website or go to the San Antonio website:
http://www.sarodeo.com/client/media/4776/5876/final_revised_2012_photography_contest.pdf
- ◆ All entries must be exactly an 8x10 inch print.
- ◆ Review the rules for mounting guidelines and labeling picture.
- ◆ Prints can be black & white, color, or all media
- ◆ Contestants can have only two (2) photographs per category for a total of 26 entries per youth.
- ◆ All entries must be received by mail and on or before midnight on January 15, 2012 to be eligible. The address in San Antonio is listed in the rules.
- ◆ There are no entry fees for the contest

Horse Project!



If you are interested in the 4-H Horse project, call the Extension Office 254-697-7045 or email ce-walker@tamu.edu to get on the email listing for future meeting activities. The leaders, Tarrin Warren and Amy Laurrell will be planning project meetings.

Consumer Project



It's not too late to join the 4-H Consumer Project Group. We will be meeting in November, January, and February to prepare for contests. Team members learn to rank products according to the needs and wants expressed in a story explaining the use of the products. Practice sessions prepare the 4-Hers for the contests, but also help them become better consumers. All interested 4-Hers and parents are welcome to join the project group.

Meeting Place: Bea's Kitchen, Cameron
 Meeting Times: 6:00 p.m. to about 7:30 p.m.
 Meeting Dates: (tentative schedule—get on the email list to receive meeting announcements)

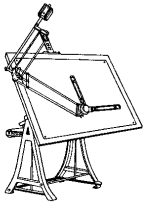
Tuesday - January 10	Tuesday - January 17
Monday - January 23	Monday - January 30
Monday - February 6	Monday - February 13
Friday - February 17 (consumer practice in San Antonio)	

Contest Date:
 Saturday - February 18 (San Antonio Livestock Show Consumer Contest)
 Saturday - March 3 (District 8 4-H Consumer Contest)

During November practice sessions, 4-Hers will have the opportunity to sign-up for

- ◆ San Antonio Livestock Show Consumer Contest set for February 18th
- ◆ District 4-H Contest set for March 3rd

The Consumer Project is a great opportunity for 4-Hers to learn the importance of financial decisions. Through the project sessions, the 4-Hers practice comparing products for different situations. Email Cheryl Walker at ce-walker@tamu.edu to get on the email list for future practice sessions. Gail Hollas is one of the project leaders.



Milam County Jr. Livestock Show Home Economics News

Home Economics Department Show - March 30, 2012

At Bea's Kitchen



Feb 21 - Home Economics Entry Deadline - submit to the Milam County Extension Office by 5:00 p.m. or to the show secretary at any of the Animal Tag-In Nights (listed on Page 8 of this newsletter).

2012 Milam County Jr. Livestock Show rules for the animals and home economics department are now available! Check them out on the Milam County Extension website - <http://milam-tx.tamu.edu>. It is your responsibility to read the rules! Below is the Age Divisions and Divisions for the Home Economics Department

Age Divisions for Home Economics Department:

- A. Beginner Division Open to anyone between the ages of 5 - 8
(as long as they are in one of the following grades - Kindergarten, 1st or 2nd grades)
- B. Junior Division Open to anyone between the ages of 8 and in the 3rd Grade - 10 years of age
(as of August 31, 2011)
- C. Intermediate Division Open to anyone between the ages of 11- 13 (as of August 31, 2011)
- D. Senior Division Open to anyone between the ages of 14- 19 (as of August 31, 2011)

Home Economics Divisions:

- A. ARTISTIC ARRANGEMENT DIVISION:
- B. CLOTHING DIVISION:
- C. CREATIVE ART DIVISION:
- D. COLLECTION / DISPLAY DIVISION:
- E. DRAWING DIVISION:
- F. FOOD DIVISION:
- G. PAINTING DIVISION:
- H. PHOTOGRAPHY DIVISION:
- I. SCRAPBOOKING DIVISION:
- J. WOOD AND METAL CRAFT:

Available on Website
-- Entry Forms
-- Complete Rules



MCJLS

March 29 - 31, 2012

- ◆ Rules are posted on the county website and copies are available at the Milam County Extension Office.
- ◆ Feb 8—Broiler Pick-Up - Bring a Box, Youth Expo Building, 4:00 - 5:30 p.m.
- ◆ Feb. 21—Market Bunnies will be tattooed, Youth Expo Building, 4 - 6 p.m.
- ◆ All animal entries must be received by the show secretary
- ◆ Mar 23—All 4-H Showing at the MCJLS must submit an Eligibility form to the Milam County Extension Office.

****Please Note a Major Change for the 2012 Show****

ALL Steers, Swine, Lambs, and Goats making the sale will be put on the resale truck!

Entry nights for the Milam County Junior Livestock Show have been scheduled. Attending one of the three entry nights is required to turn in entry forms, entry fees, and to ensure that all the required information is included for all livestock entries for the March show. Please note that each exhibitor will be required to provide a social security number with each entry eligible for the auction.

All animal entries must be submitted at an entry night, but Home Economics Department entries may be submitted at an entry night or at the Milam County Extension Office by the February 21 deadline. Entry nights will be held at the following times and locations:

MCJLS Entry Nights

- Feb 14 — Thorndale Ag Science Classroom
 - Feb 16 — Rockdale Ag Science Classroom
 - Feb 21 — Cameron Youth Expo Building,
- Tentative Time for Entry Nights — 4-6 pm

Entry Forms Available on Website



Community Service Projects

Your Help Is Always Needed

-- Give a Helping Hand --



◆ March - Ronald McDonald House Donations

Wish List Items will be delivered during spring break to the Temple Ronald McDonald Home. Start now collecting items like: individual serving size snack and meal items (no refrigeration required); paper towels, napkins, plates, trash bags, toys, games, etc.

◆ Can Tabs

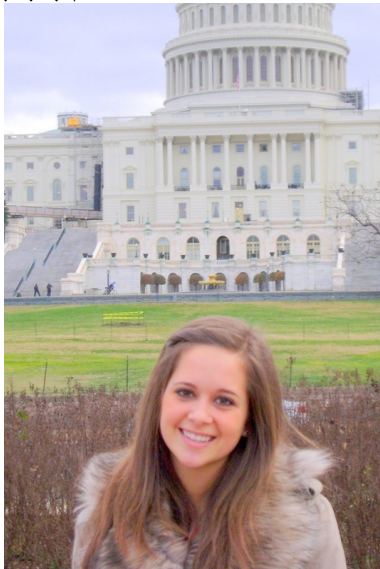


Can tabs are collected throughout the year. Drop them off at the Extension Office and during Spring Break 4-Hers will deliver them to the Temple Ronald McDonald House.



◆ Operation "Huggables"

Operation "Huggables" is collecting stuffed animals that are donated to children of military families who have a parent being deployed overseas. Bring new or gently used stuffed animals and drop them off at the Extension Office. You can also contact the 4-Hers coordinating the project: William Dean and A.J. Harwell.



Congratulations to 4-Hers

4-Her Visits Washington D.C.

Madeline Kostroun, Cameron 4-Her attended the Texas 4-H Leadership Conference in Washington D.C. from November 24 - 29, 2011. She was one of about thirty 4-Hers who were selected to attend the conference because they were first place state record book winners. This five day trip to the nation's Capitol is an educational tour. They spent a day on Capitol Hill along with time touring historical sites. The group also enjoy a taste of a of culture in the arts districts. A highlight of the trip was a salute to our soldiers through a wreath laying at Arlington National Cemetery.

State 4-H Opportunities



Registration information is available on the State 4-H Center website:

http://texas4hcenter.tamu.edu/schedule_of_events/index.php

Adults Chaperones are needed for county groups going to the 4-H Center.

Teen Retreat - Jan 6 -8, 2012

The Statewide 4-H Leadership Retreat for senior age 4-Hers is scheduled at the State 4-H Center on Lake Brownwood - January 6 - 8, 2012. This is an opportunity for 4-Hers to attend workshops with 4-Hers across the state. There may still be space available if you register before Christmas.

Let the Extension Office know if you are going to the retreat.



Texas 4-H Beekeeping Essay Contest

The 2012 Texas 4-H Beekeeping Essay Contest materials are available. The topic for the essay contest is: "The Results of Honey Bee Pollination in My Community". Complete contest rules and submitting guidelines are available at: http://texas4h.tamu.edu/youth/beekeeping/index_youth_beekeeping.php.

Essays can only be submitted electronically by the January 13, 2012 deadline.



4-H Foundation Alliances and Opportunities

- ◆ **LONE STAR 4-H COLLECTION JEWELRY** Check out the great gift ideas to honor their years of involvement in 4-H through the Lone Star Silversmith jewelry divisions "4-H Collection." You can view the current pieces online at <http://texas4hfoundation.org/texas-4-h-alliances/lone-star-collections-4-h-jewelry>
- ◆ **LA QUINTA OFFERS 4-H DISCOUNT.** 15% discount on rooms through direct reservations by calling the hotel direct, calling the toll free reservation line at 1-800-531-5900, or online at www.lq.com. Please mention the "TX4H" promotional code when making reservations.
- ◆ **Texas 4-H Foundation website** for the current 4-H Foundation Alliances <http://texas4hfoundation.org/texas-4-h-alliances>

Milam County Extension Office Staff

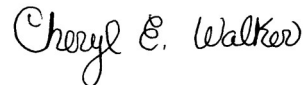
Extension programs serve people of all ages regardless of socioeconomic level, race, color, sex, religion, disability, or national origin.

The Texas A&M University System, U.S. Department of Agriculture, and the County Commissioners Court of Texas Cooperating.

Milam County 4-H
100 E. 1st Street
Cameron, TX 76520

Phone: 254-697-7045
Fax: 254-697-7046
E-mail: milam@ag.tamu.edu

To Make the Best Better



Cheryl Walker
County Extension Agent
Family & Consumer Sciences



Jon Gersbach
County Extension Agent
Ag & Natural Resources

*Merry Christmas
Happy New Year!*

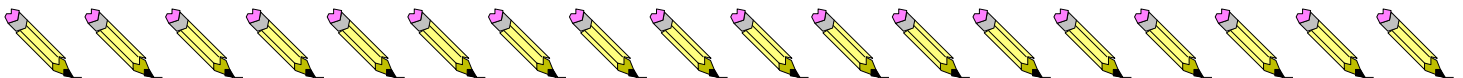
Marcia Felton
Office Manager

Click on 4-H in Milam County for more information & 4-H Updates
<http://milam-tx.tamu.edu/>



4-H Re-Enrollment or Enrollment

- ◆ On-Line Enrollment at <https://texas.4honline.com>
- ◆ \$20 Annual Youth Enrollment Fee (\$25 after October 31)
- ◆ Annual Enrollment required for ALL 4-Hers and Adult Leaders



Eligibility Forms

- ⇒ Required from 4-Hers for each competitive event (Sept - May)
- ⇒ Completed by 4-Her and Signed by the school .
- ⇒ Return signed forms to Extension Office by fax or mail one week prior to event.
- ⇒ Forms available on the Extension website and at the Extension Office.

